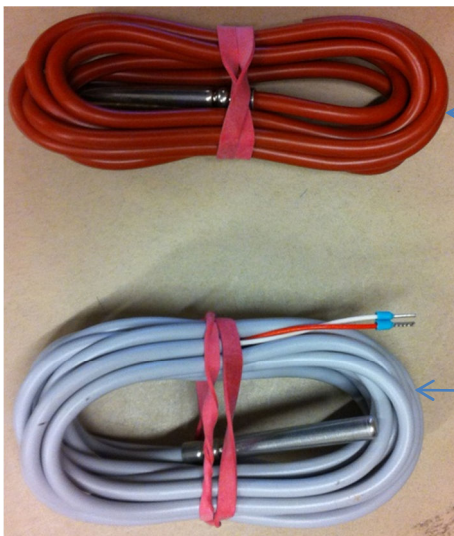


Kvik guide til Vølund solvarme

Vølund Solo solstyring:

Føler valg:



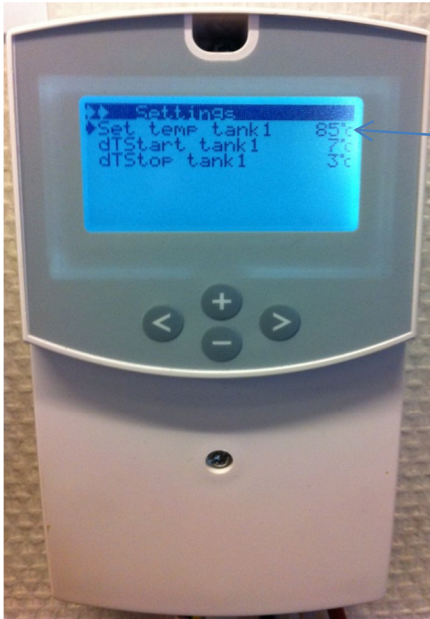
T1 føler til toppen af solfanger (Rød)

T2, T3, T4 føler til bund af tank og ekstraudstyr (Grå)



Styring:

I styringen, under menu punktet service skal der vælges Sprog, tid og dato samt der skal vælges hvilket system styringen skal styre og om det er vakuumrør.



Temperatur indstilling:

Åben menuen Settings

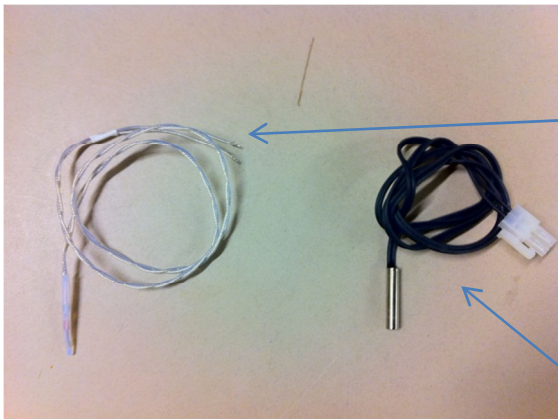
Indstil "set temp. Tank1" til 85 °C.

OBS:

Ved tanktemperatur over 65 °C til varmt brugsvand, skal der installeres blandeventil (Skoldningsikring)

Vølund anbefaler at man altid at installere blandeventil på solvarmeanlæg til brugsvand

NIBE SOLAR40:



Følervalg:

BT53 føler til toppen af solfanger (Transparent)

BT54 føler til bunden af vandbeholder (Sort)

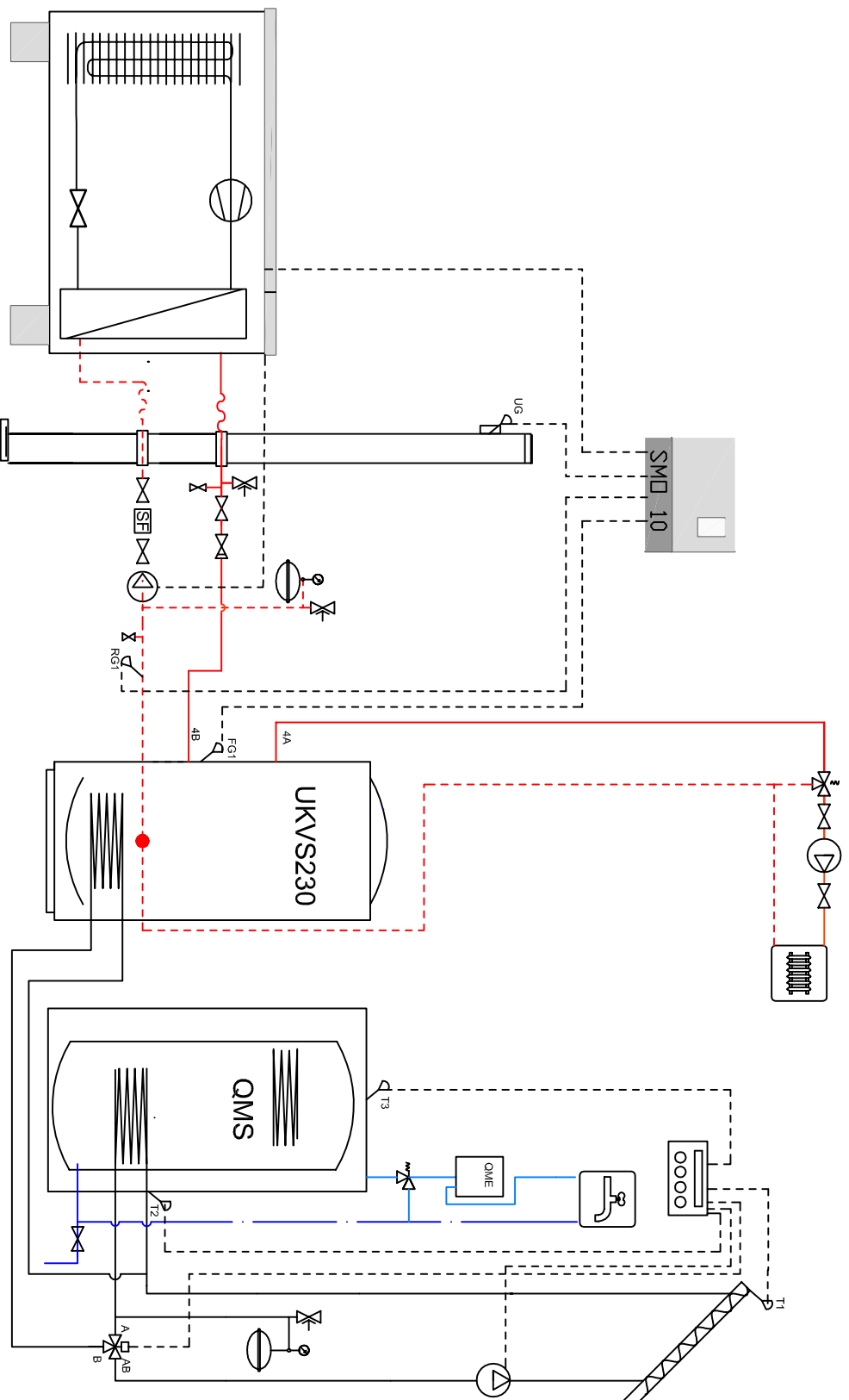


Styring:

I styringen, under menu punktet 5.3.4 skal der indstilles temperature. De skal som udgangspunkt ikke ændres med mindre der er anden grund til det.

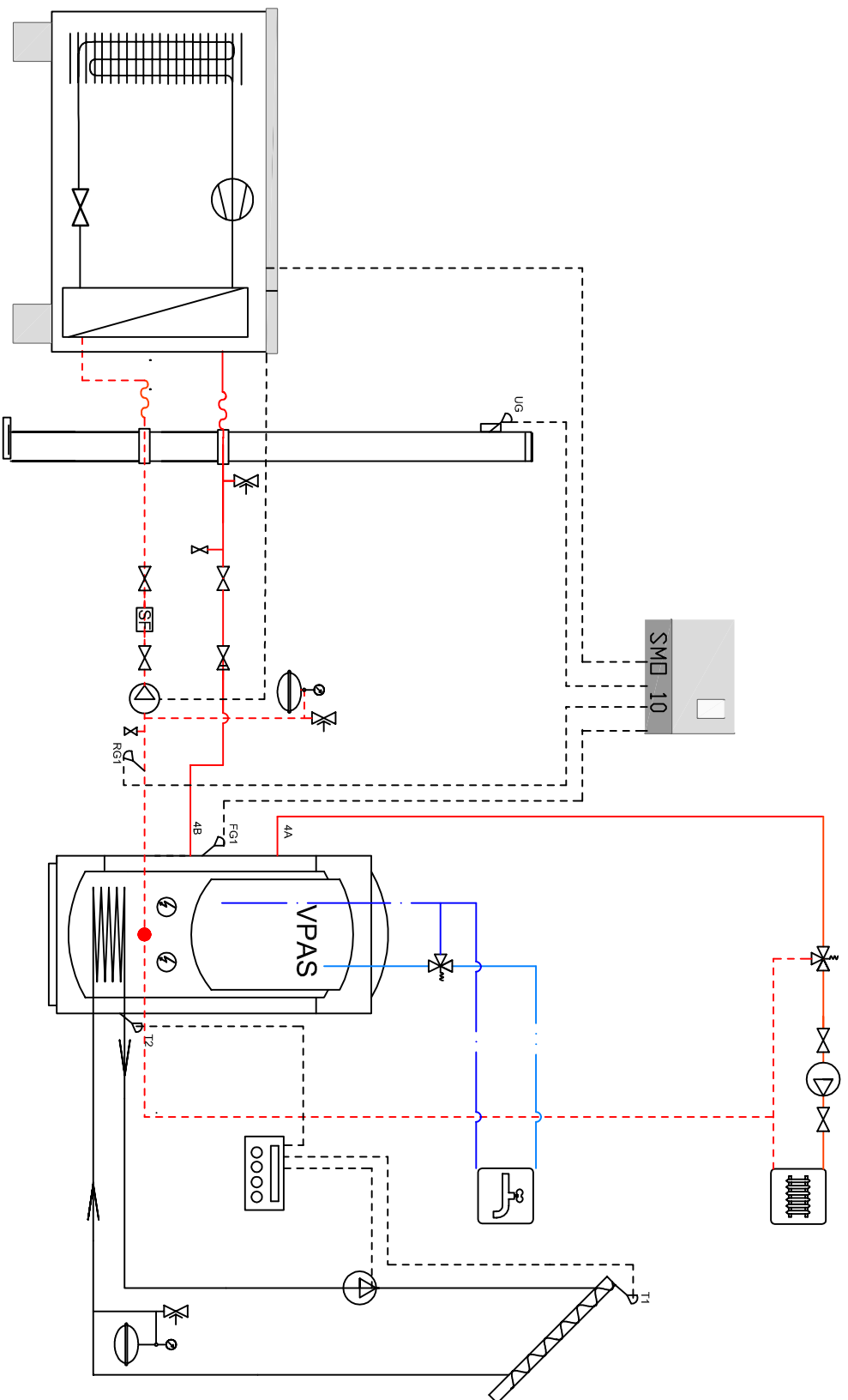
OBS:

Menu 5.3.4 vil først være aktiv når solvarme er aktiveret i menu 5.2






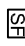




SIGNATUR

- Contraventil
- Kugelhane
- Aftap
- Snavse filter
- Trykseparator
- Sikkerhedsventil
- Uderføler (UG)
- Føler (FG1, RG1)
- Manometer
- skolingssikring: VVS nr. 723413006 (Type FRESE blandeventil 30/60)

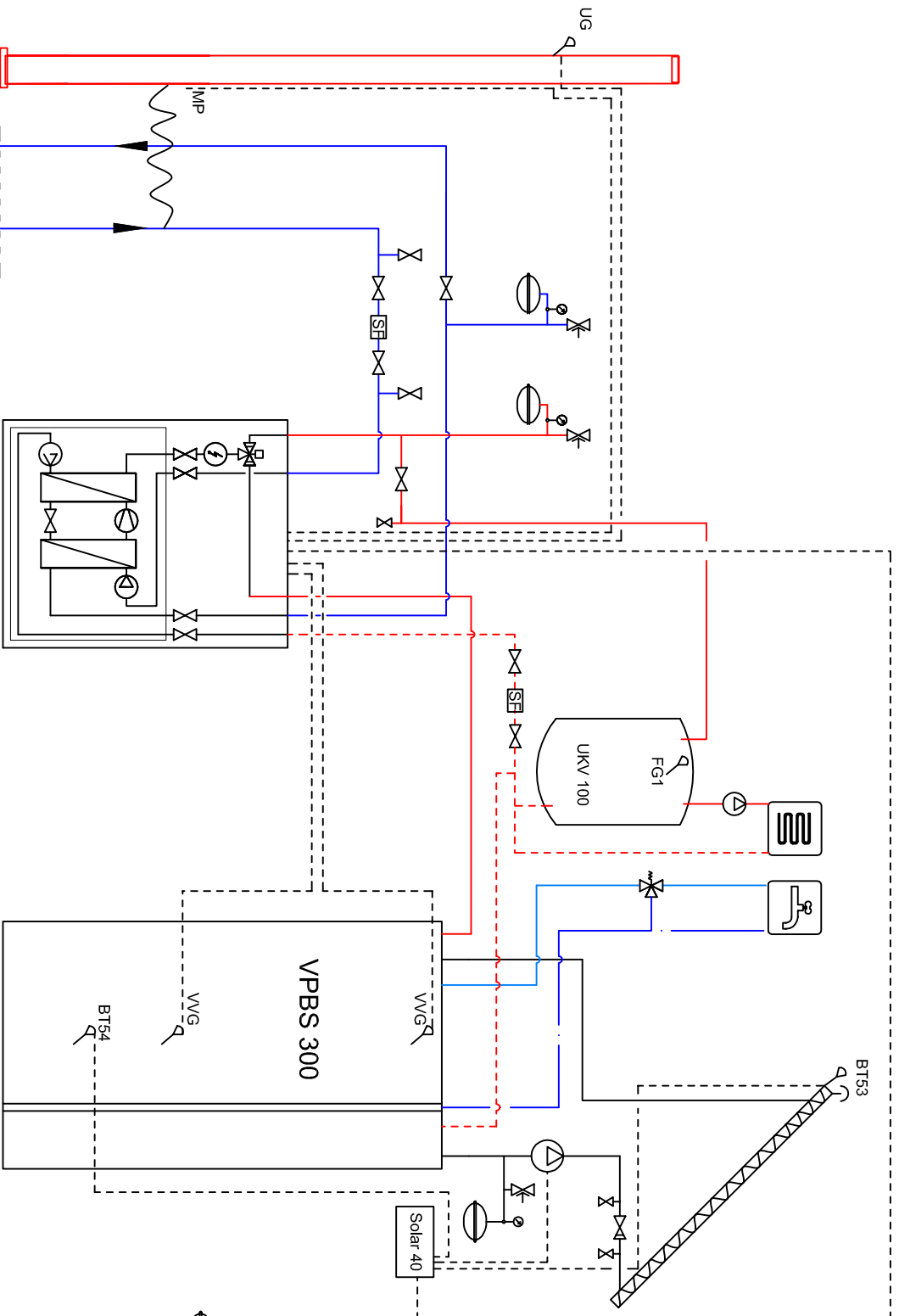


FIGHTER 2025. Prioritere opvarmning af (VPAS) Varmvand via Varmepumpe og der efter mod centralvarme Anlægget. El-patron indkobles automatisk når effekten i varmepumpen over stiges.

SIGNATUR






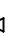
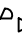


-  Kontraventil
 -  Kuglehane
 -  Aftap
 -  Trykspantion
 -  Sikkerhedsventil
 -  Udeføler (UG)
 -  Føler (FG1, RG1)
 -  Manometer
- skolingsikring, VVS nr.723413006
(Type FRESE blandeventil 30/60)

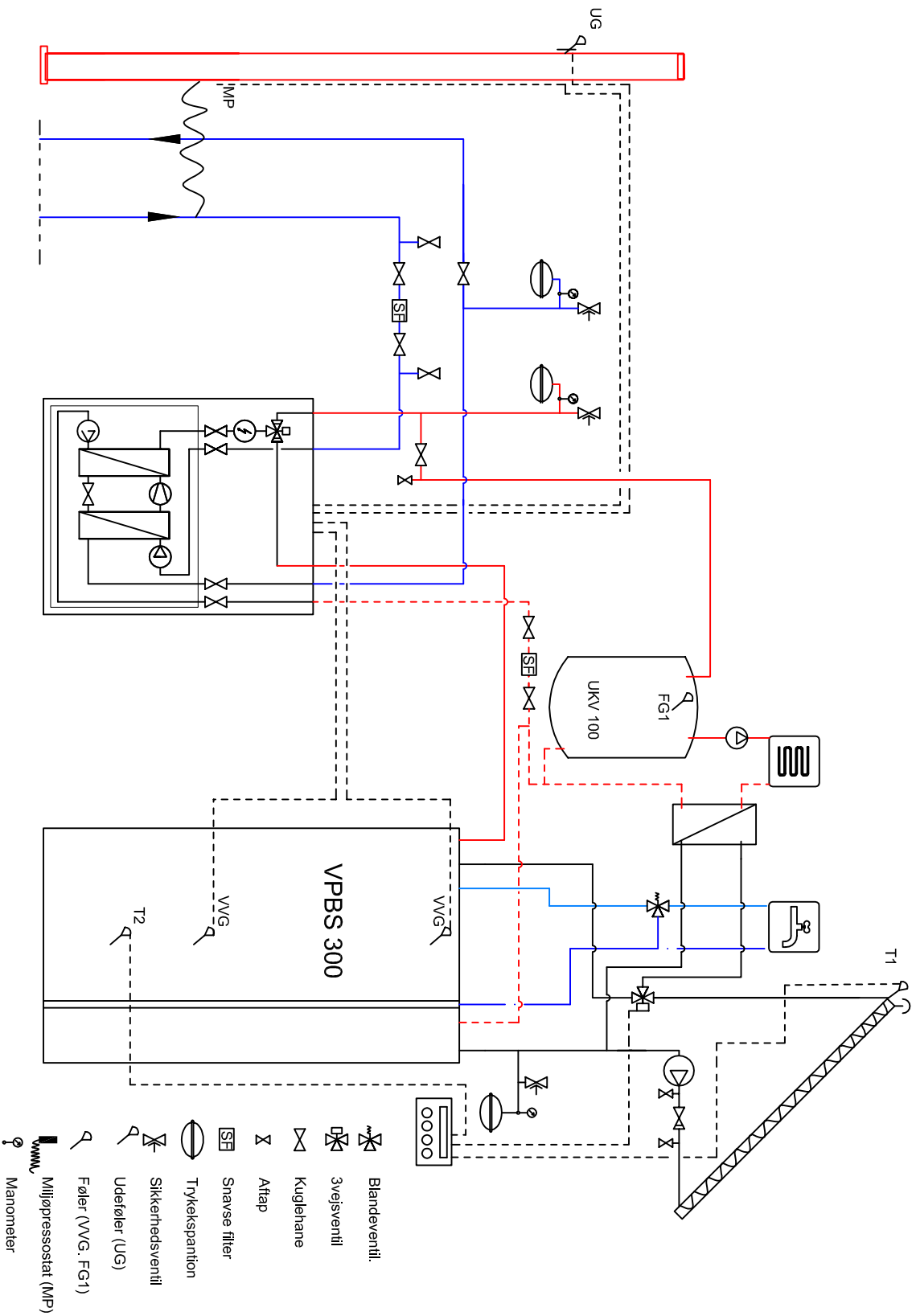
FIGHTER 1145. Med VPBS (Solvarmebeholder) - UKV 100 (Buftebeholder)

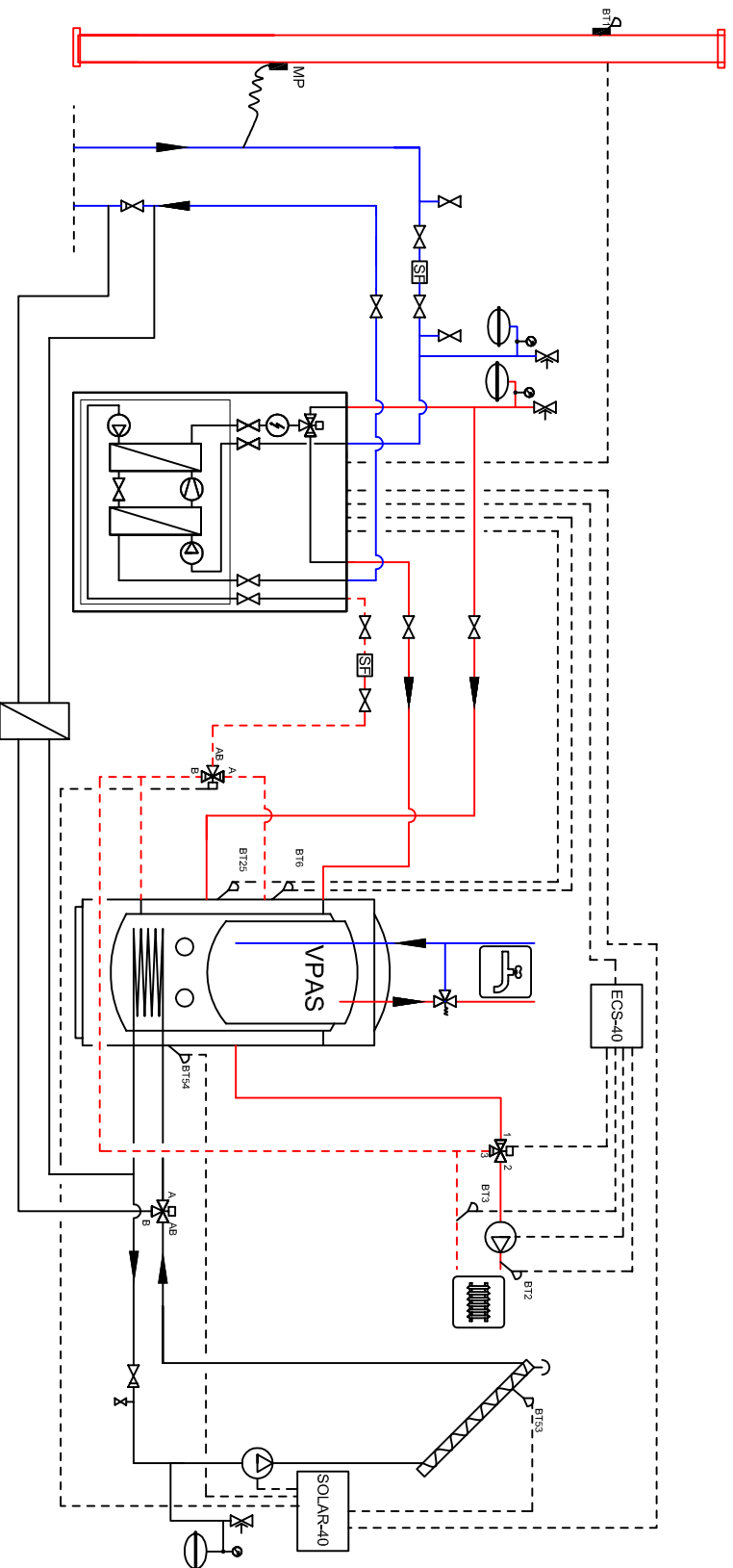


FIGHTER 1145. Prioritere opvarmning af (VPBS) Varmvand via trevejsventil og der efter veksler trevejsventilen mod centralvarme Anlægget. El-patron indkobles automatisk når effekten i varmepumpen over stiges.

SIGNATUR

-  Blandeventil, type Frese, VVSnr. 723413.006
-  Kuglehanne
-  Aftap
-  Snaruse filler
-  Trykspartion
-  Sikkerhedsventil
-  Udføler (UG)
-  Føler (VVG, FG1)
-  Manometer

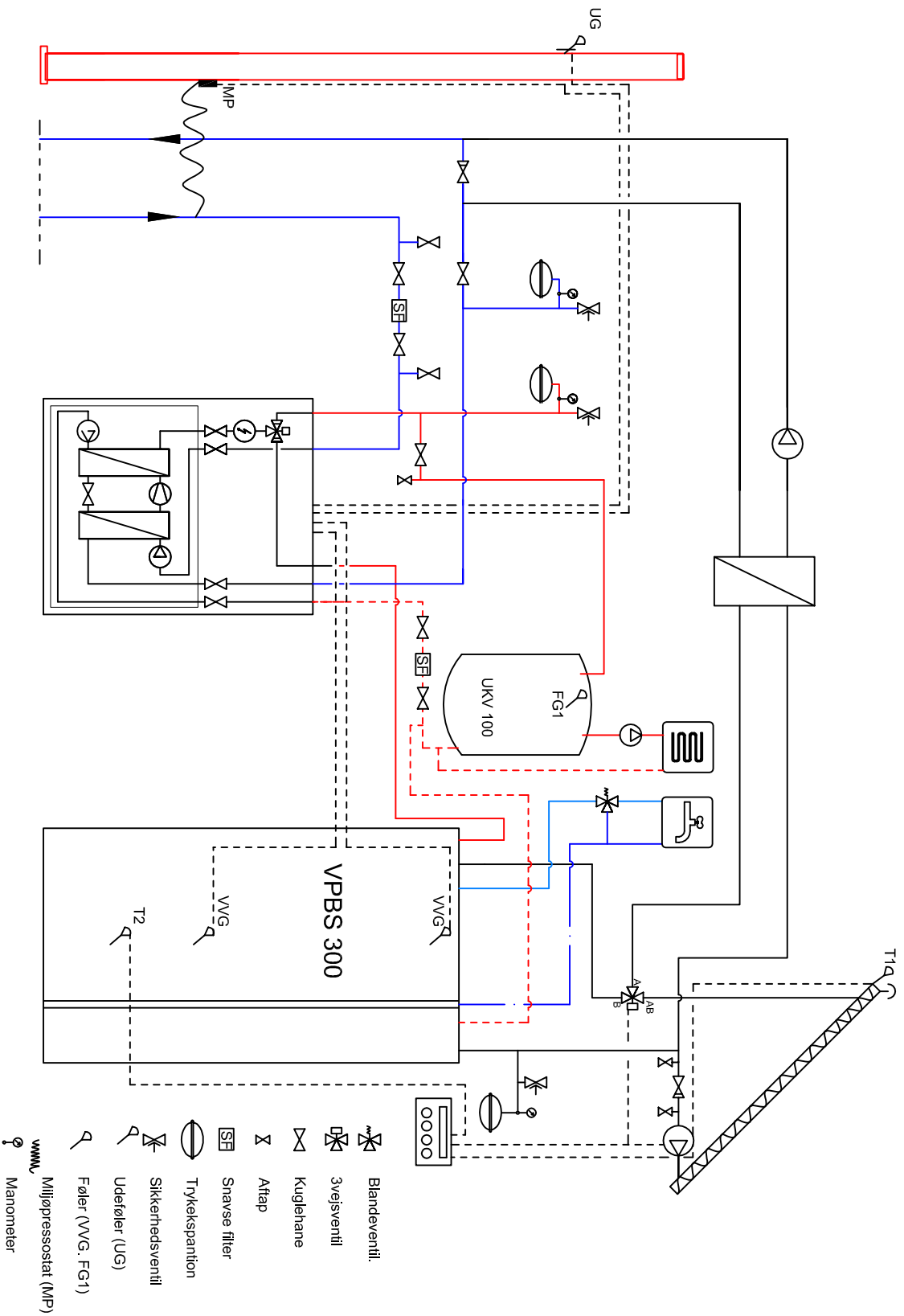




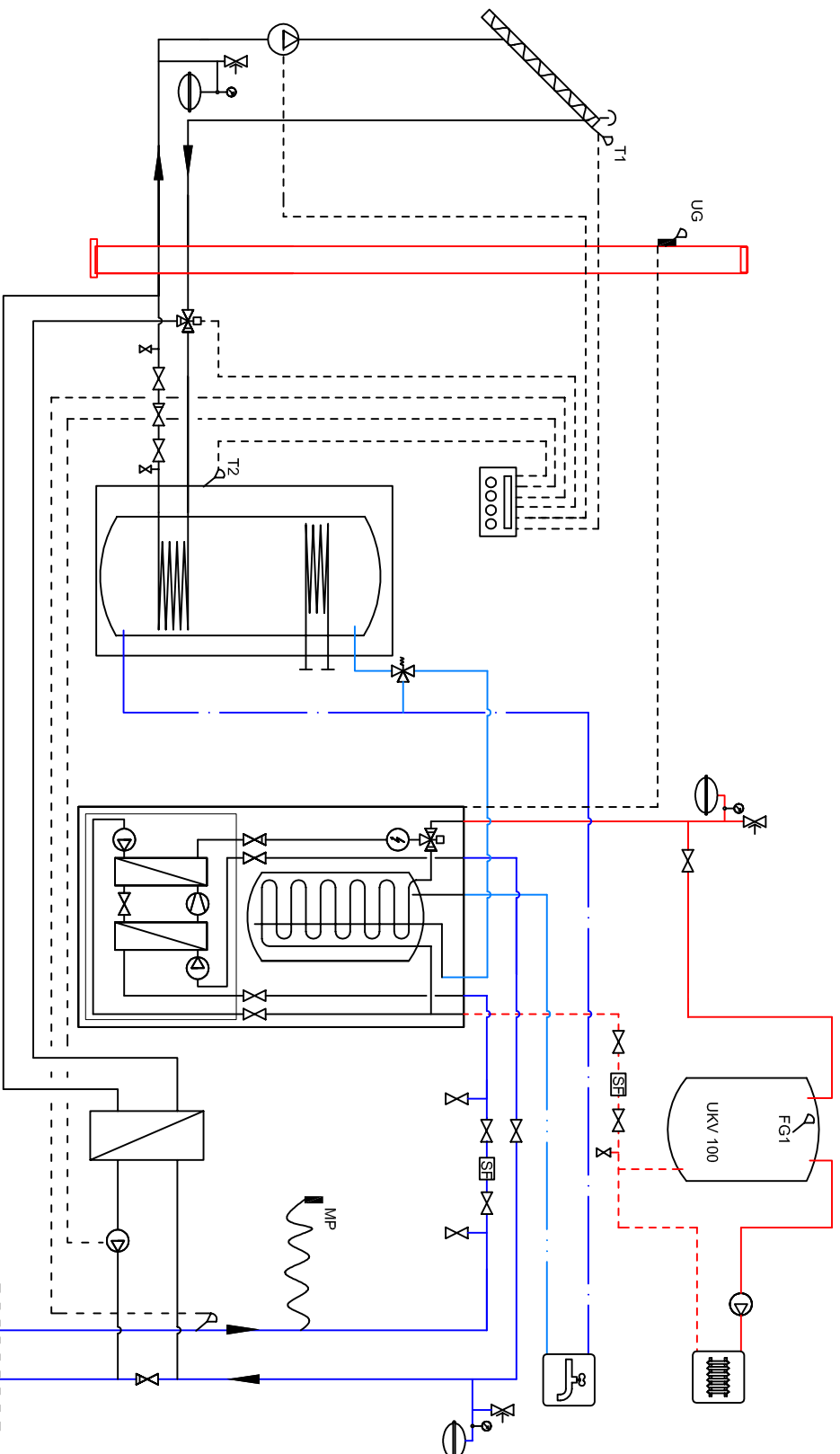
FIGHTER 1145. Prioritere opvarmning af (VPAS) Varmvand via trevejsventil og der efter veksler trevejsventilen mod centralvarme Anlægget. El-patron indkobles automatisk når effekten i varmepumpen over stiges.

SIGNATUR




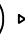







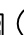
- Trevejs zoneventil
- Shuntventil
- Blandeventil, type Frese VVS.nr. 723413.006
- Kuglehane
- Atlap
- Snavse filter
- Trykkespantion
- Sikkerhedsventil
- Udeløber (BT1)
- Føler (BT25, BT16, BT3, BT2)
- Målepressestat (MP)
- Manometer



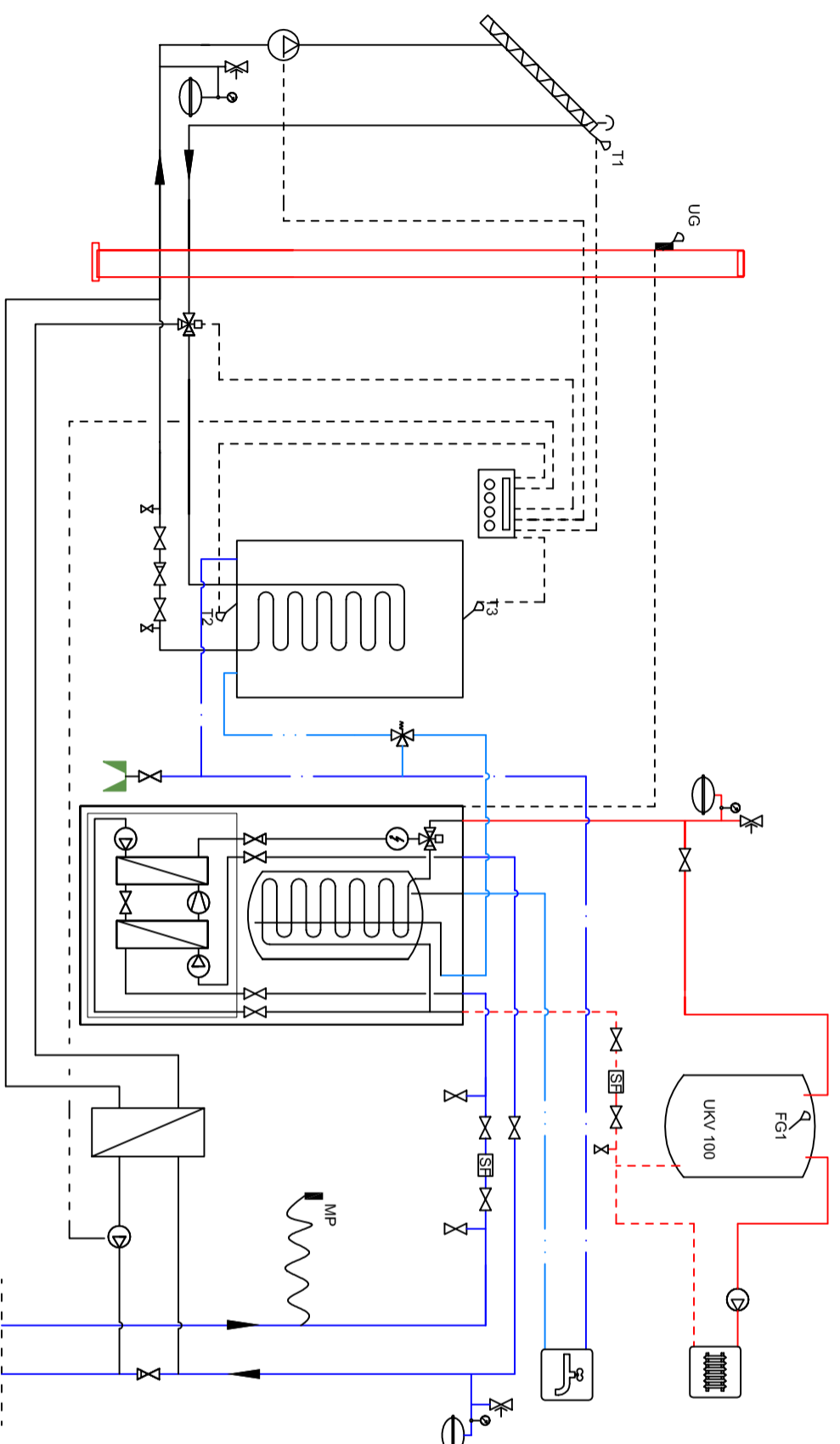
Vølund Varmeteknik - Fighter 1245 med Solvarme








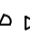

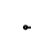




SIGNATUR

-  Kuglehanne
-  Kontroversventil
-  Aftap
-  Trykspænitton
-  Sikkerhedsventil
-  Føler (T1, T2, FG1)
-  Manometer
-  Skolingsskikng
-  Cirkulationspumpe
-  Snavesfller
-  Udetøler
-  Miljøpressostat

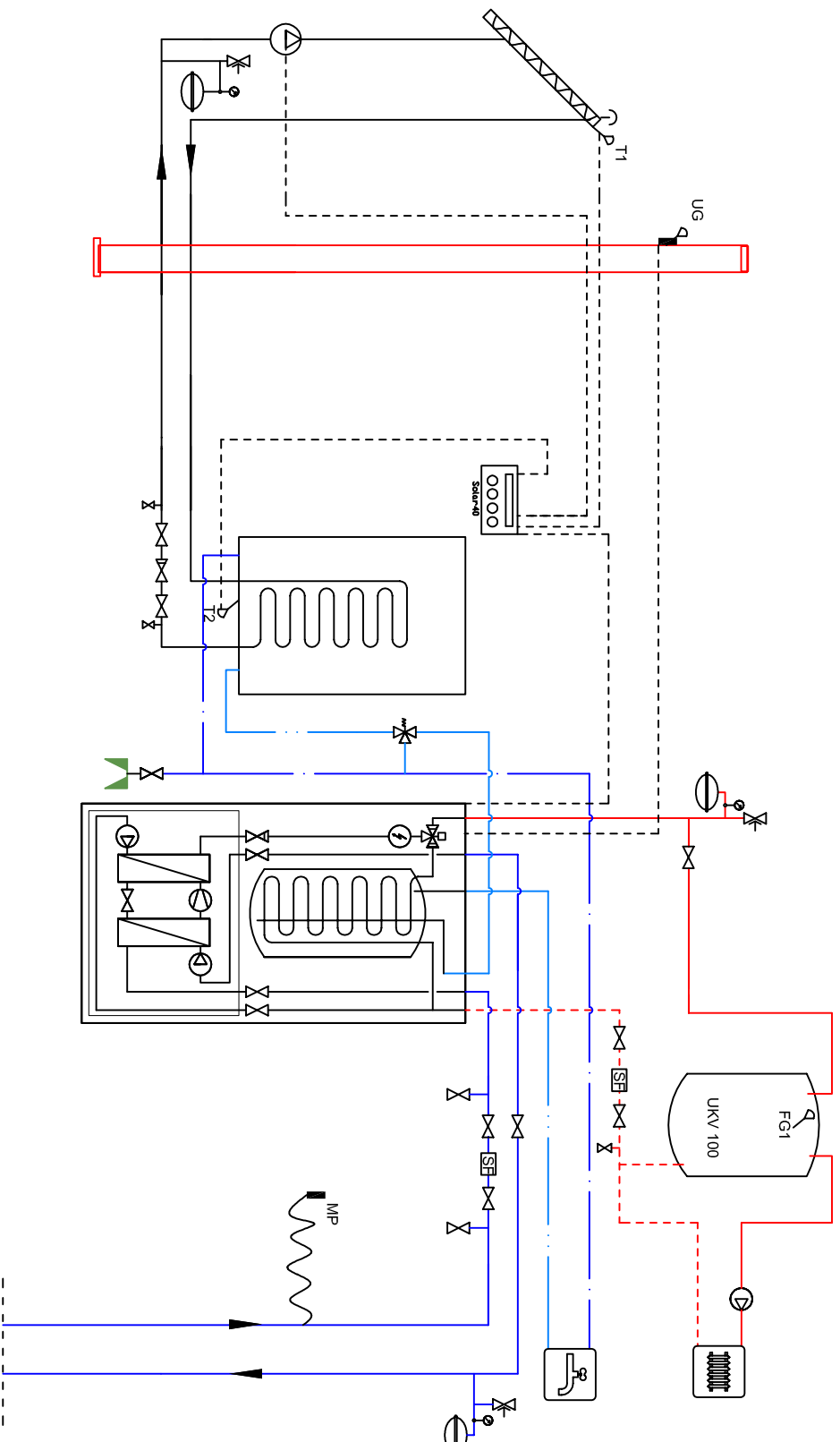
Vølund Varmeteknik - Fighter 1245 med QM200 og Solvarme



SIGNATUR

-  Kuglehane
-  Kontroversill
-  Aftrap
-  Trykkespantion
-  Sikkerhedsventill
-  Følter (T1, T2, Fe-)
-  Manometer
-  Skolningsikking
-  Cirkulationspumpe
-  Snavsefilter
-  Udefølter
-  Miljøpressostat

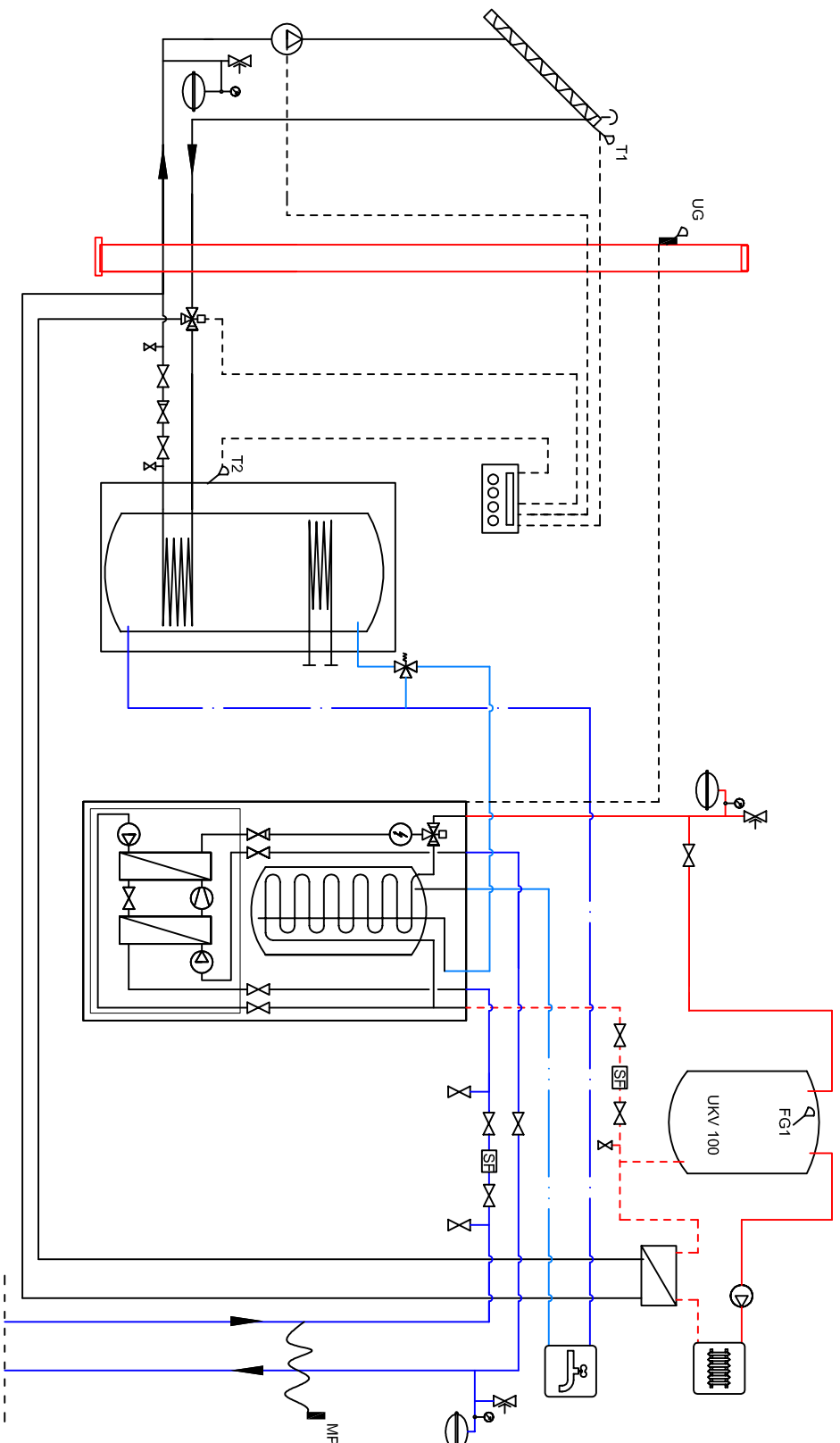
Vølund Varmeteknik - Fighter 1245 med QM200 og Solvarme





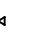
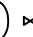



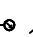
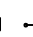


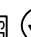
SIGNATUR

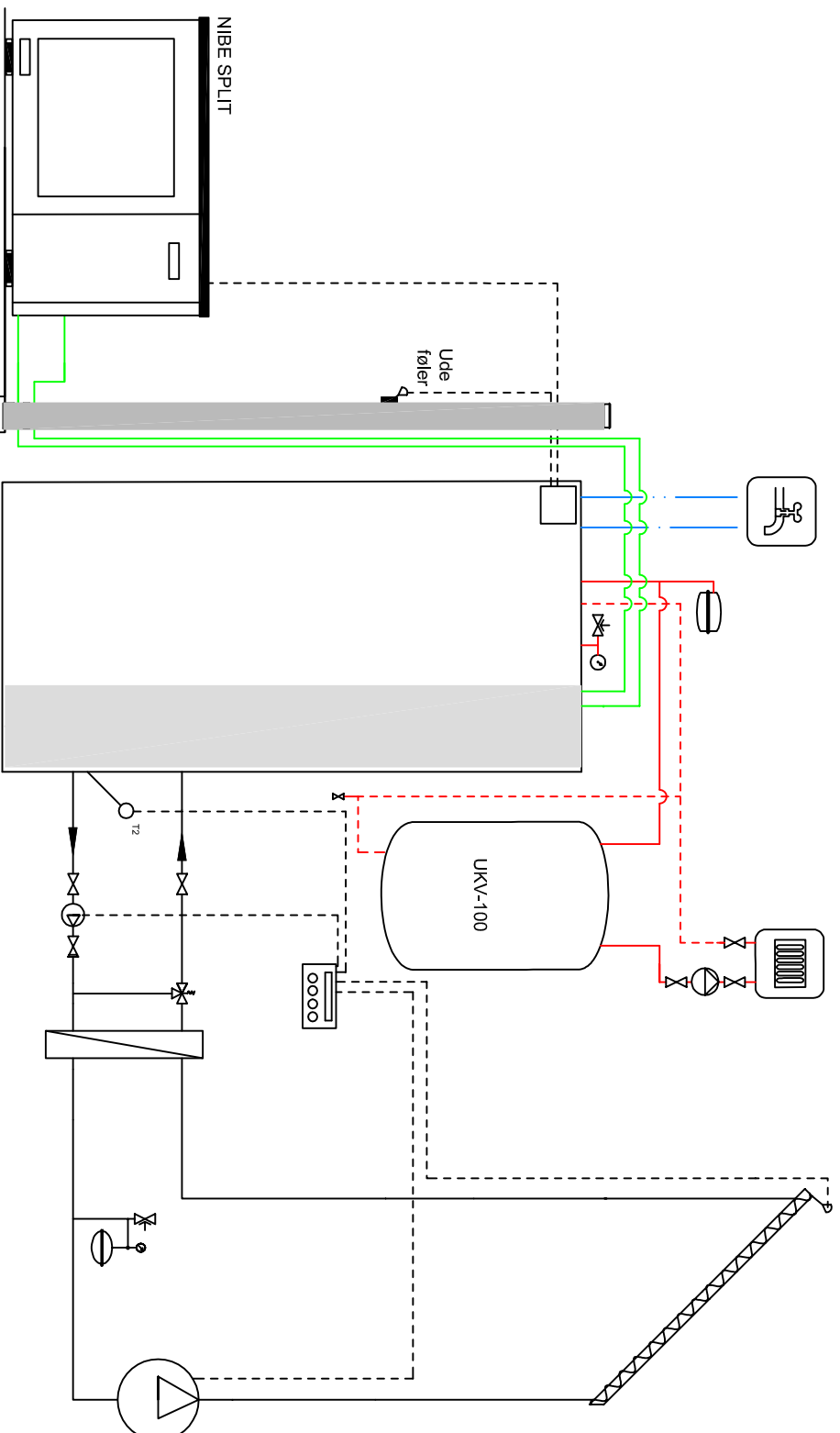
- Kuglehaner
- Kontraventiler
- Aftap
- Trykkespantion
- Sikkerhedsventil
- Føler (T1, T2, FG1)
- Manometer
- Skolingsskikng
- Cirkulationspumpe
- Snavsfilter
- Udetøler
- MIP
- Miljøpressostat

Vølund Varmeteknik - Fighter 1245 med Solvarme











SIGNATUR

-  Kuglehane
-  Kontroversventil
-  Aftap
-  Trykspæntion
-  Sikkerhedsventil
-  Føler (T1, T2, FG1)
-  Manometer
-  Skolningsskiftning
-  Cirkulationspumpe
-  Snavesfilter
-  Udetøler
-  Miljøpressostat

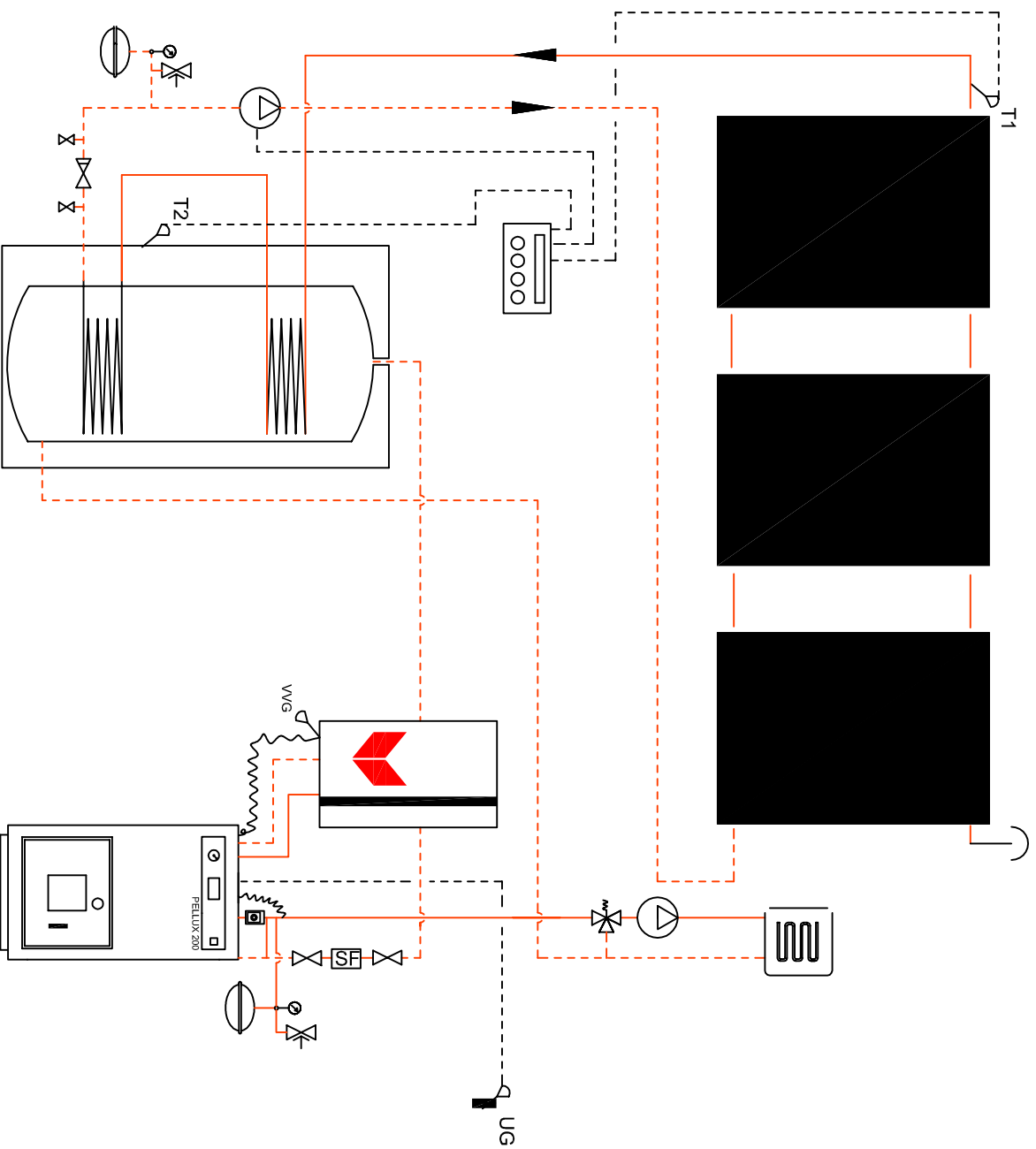


NIBE SPLIT Prioritere opvarmning af (ACVM 270) Varmvand og der efter veksler den mod centralvarme Anlægget. El-patron Indkobles automatisk efter behov.








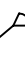
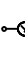
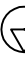
SIGNATUR

-  Kuglefløse
-  Aftap
-  Cirkulationspumpe
-  Trykspantion
-  Sikkerhedsventil
-  Udeføler
-  Manometer
-  Blandeventil

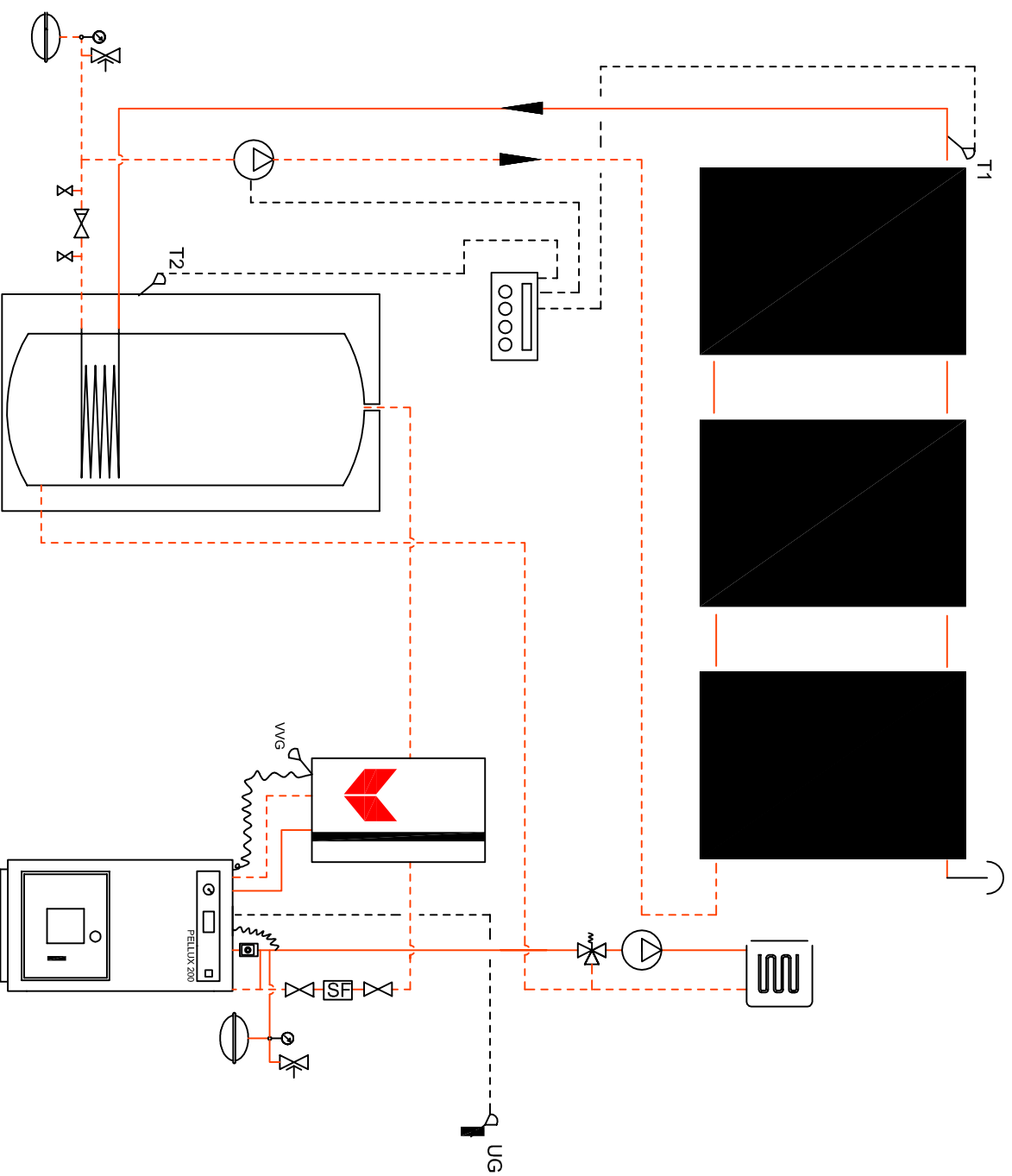
Vølund Varmeteknik **PELLUX 200 - QMS Solvarmebeholder.**







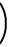
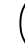


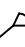
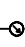
SIGNATUR

-  Kuglehanne
-  Kontraventil
-  Aftap
-  Snarve filter
-  Trykspantion
-  Sikkerhedsventil
-  Udeføler (UG)
-  Føler (T1, T2, WVG)
-  Manometer
-  Cirkulationspumpe

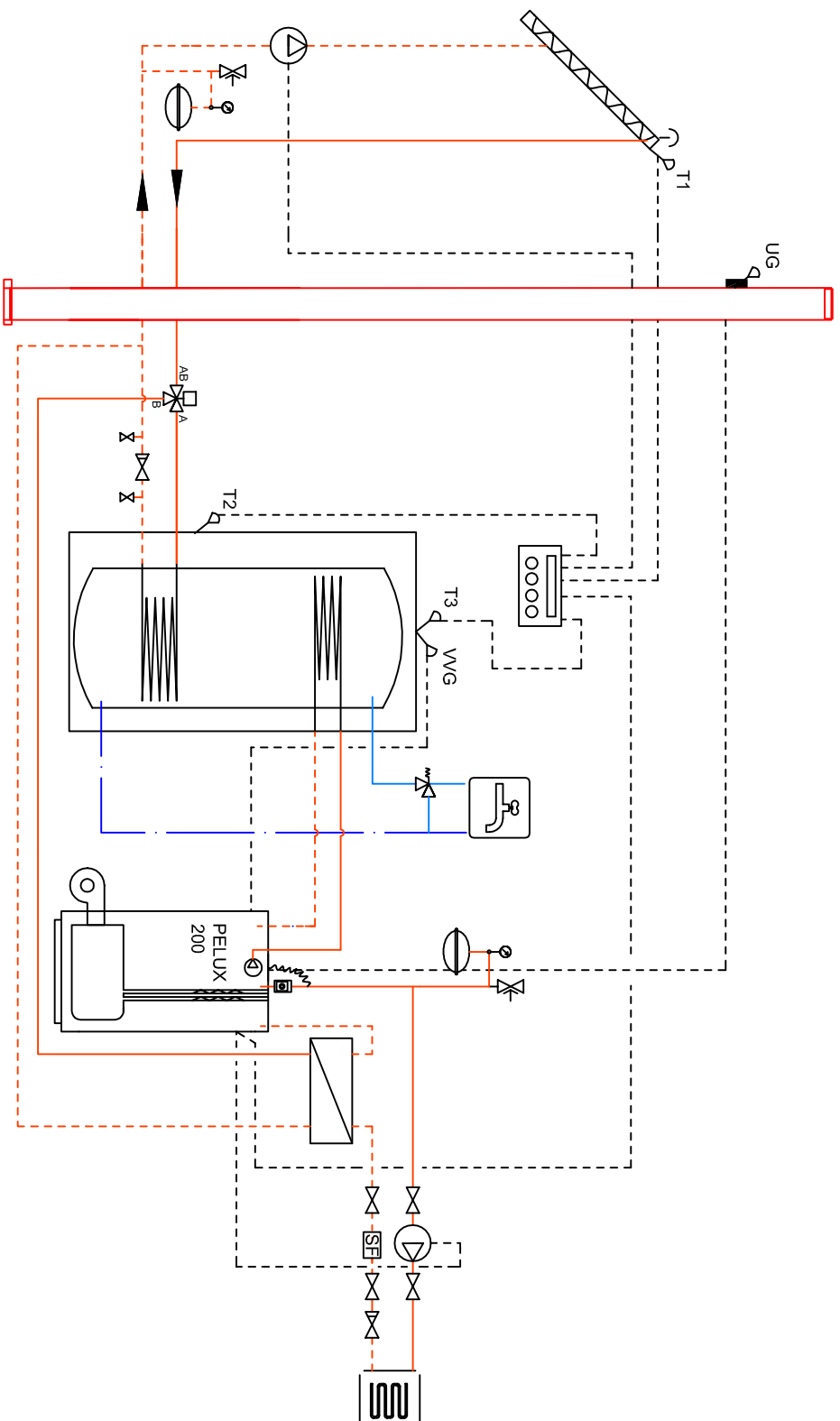
Vølund Varmeteknik **PELLUX 200 - UKVS230** Bufferbeholder













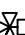

SIGNATUR

-  Kuglehaner
-  Kontraventill
-  Aftap
-  Snase filter
-  Trykspantion
-  Sikkerhedsventill
-  Udeføler (UG)
-  Føler (T1, T2, vVG)
-  Manometer
-  Cirkulationspumpe

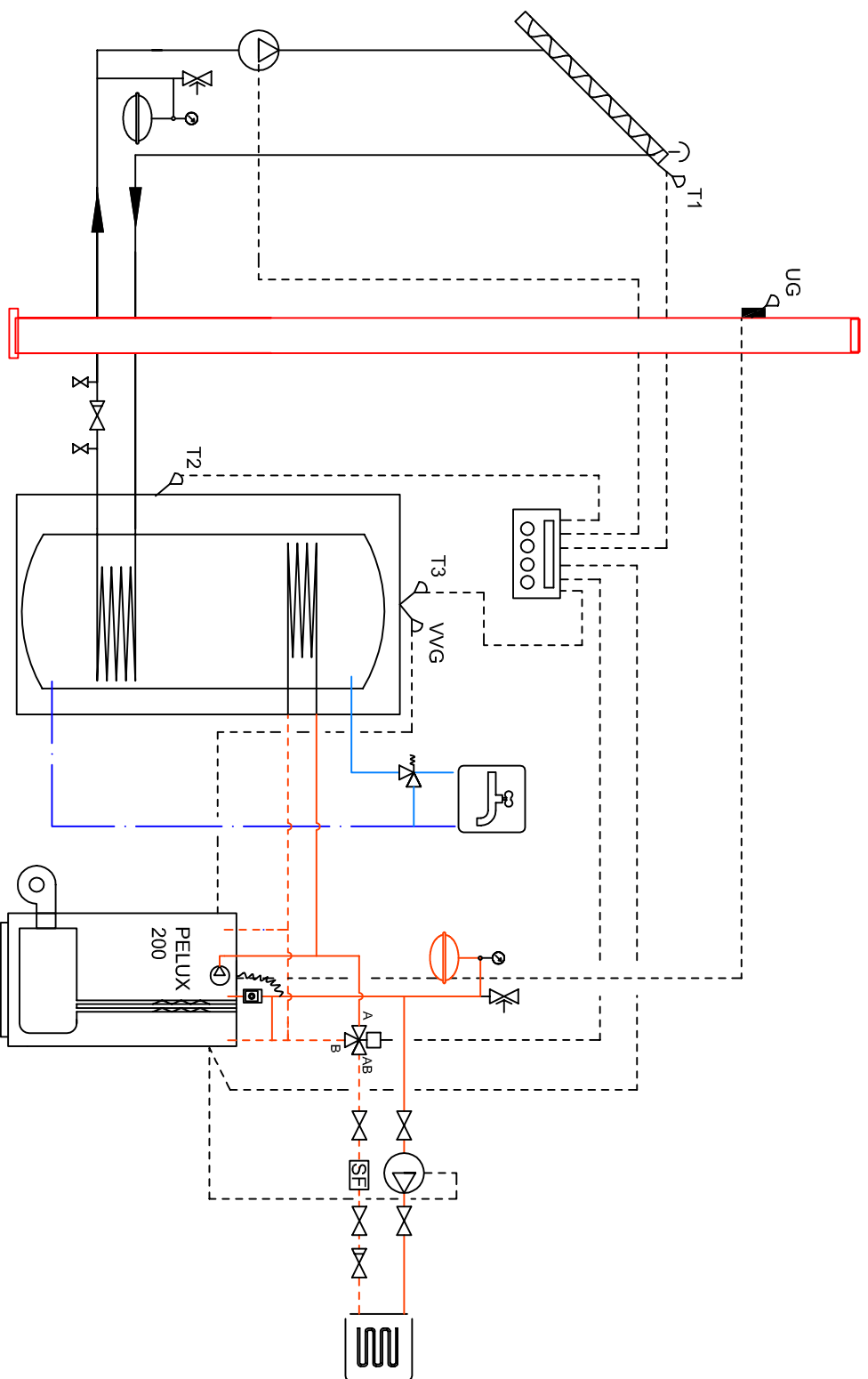
Vølund Varmeteknik PELUX 200 - Solvarme - Veksler







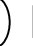
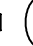



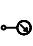


SIGNATUR

-  Kuglehane
-  Kontraventil
-  Aftap
-  Snavse filter
-  Trykspartion
-  Sikkerhedsventil
-  Udeføler (UG)
-  Føler (T1, T2, T3, V/G)
-  Manometer
-  Skolingssikring
-  Trevejs ventill
-  Cirkulationspumpe

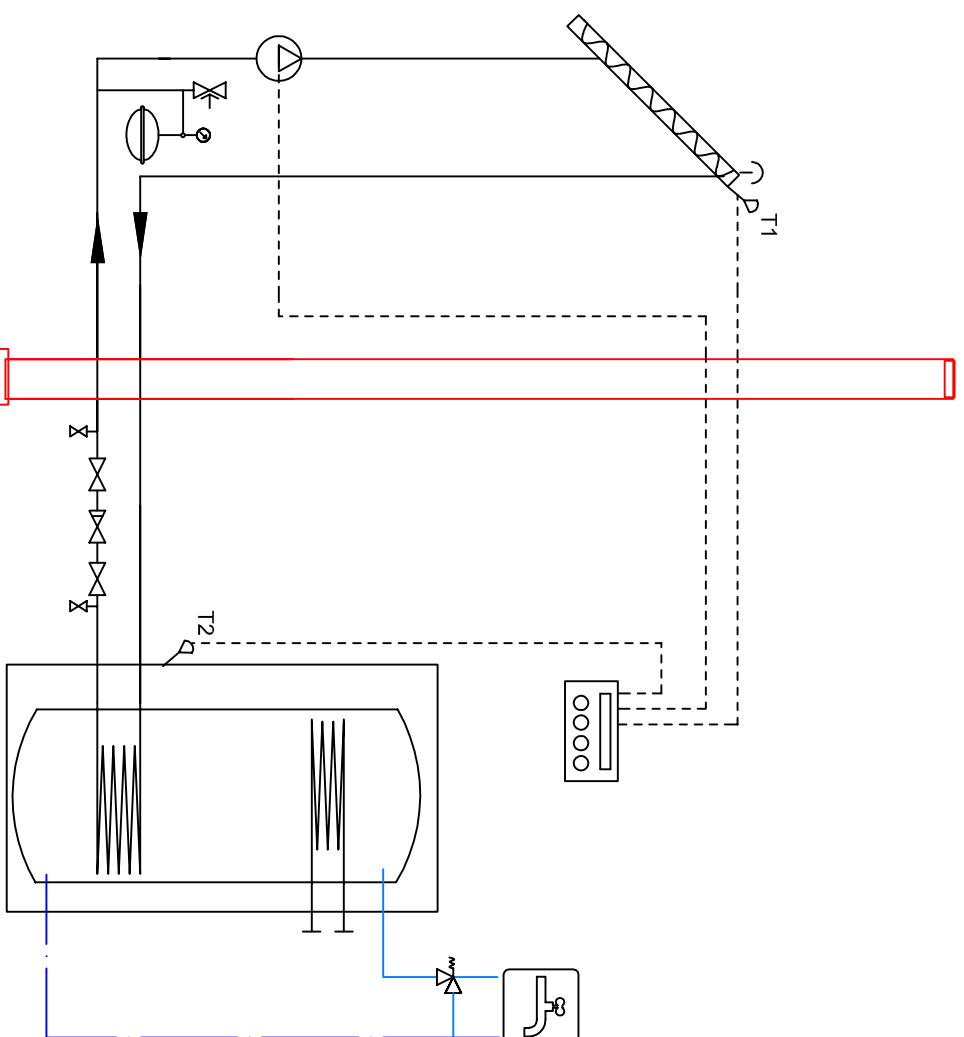
Vølund Varmeteknik PELUX 200 - Solvarme









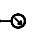


SIGNATUR

-  Kuglehane
-  Kontraventil
-  Aftap
-  Snavsse filter
-  Trykkekspanion
-  Sikkerhedsventil
-  Udeføler (UG)
-  Føler (T1, T2, T3, WG)
-  Manometer
-  Skolingssikring
-  Trevæjs ventil
-  Cirkulationspumpe

Vølund Varmeteknik - Solvarme



SIGNATUR

-  Kuglehane
-  Kontraventill
-  Aftap
-  Trykkeksponion
-  Sikkerhedsventill
-  Føler (T1, T2)
-  Manometer
-  Skolingssikring
-  Cirkulationspumpe